

## Super-structure Waterproofing - Tapes

### Perm-A-Barrier® Aluminum Flashing

Self-adhesive, rubberized asphalt detail membrane for air and vapour barrier applications

#### Description

Perm-A-Barrier® Aluminum Flashing is ideal for protecting and sealing critical areas of the building superstructure from the damaging effects of the elements. By minimizing air and water vapor flow through the building exterior at transition areas, Perm-A-Barrier Aluminum Flashing:

- Seals transition and detail areas to provide a continuous air barrier
- Prevents premature deterioration of the building envelope.

#### Installation

##### Surface Preparation

Surface must be smooth, clean, dry and free of voids, spalled areas, loose aggregate, loose nails, sharp protrusions or other matter that will hinder the adhesion or regularity of the flashing installation. Clean loose dust or dirt from the surface to which the flashing is to be applied by wiping with a clean, dry cloth or brush.

##### Temperature

Perm-A-Barrier Aluminum Flashing may only be applied in dry weather when air and surface temperatures are above -5°C.

#### Priming

Surfaces should be primed with one coat of Grace's solvent based primer - Bituthene Primer S2. It is used to allow priming and installation of membrane on damp surfaces or "green" concrete. Bituthene Primer S2 can be applied by brush or roller. DO NOT apply any primer to Perm-A-Barrier Aluminum Flashing.

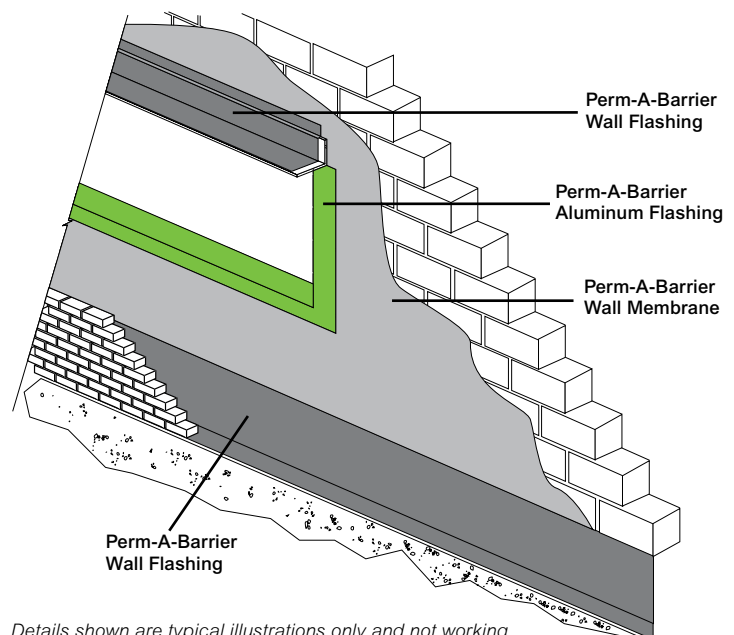
The drive for continual improvements in performance may result in product modifications. Your Grace representative will be able to provide up-to-date advice.

#### Aluminum Flashing Application

Pre-cut Perm-A-Barrier Aluminum Flashing to easily handled lengths. Peel release paper from roll to expose rubberized asphalt and carefully position tape against substrate. Press firmly into place with a steel hand roller or the back of a utility knife as soon as possible, fully adhering the tape to the substrate to prevent water from migrating under the Perm-A-Barrier Aluminum Flashing. Overlap adjacent pieces 50 mm and roll overlap with a smooth seam roller.

#### Advantages

- **Fully bonded** - transmits wind loads directly to the substrate.
- **Waterproof and impermeable to moisture** - impermeable to the passage of liquid water and water vapour.
- **Aluminum film** - provides extended UV exposure, improved sealant adhesion to film, dimensional stability, high tear strength, puncture and impact resistance.
- **Cold applied** - no flame hazard; self-adhesive overlaps ensure continuity.
- **Flexible** - accommodates minor settlement and shrinkage movement.
- **Controlled thickness** - factory made sheet ensures constant, non-variable site application.
- **Aggressive, conformable adhesive** - allows self-sealing around mechanical fasteners.
- **Wide application window** - Perm-A-Barrier Aluminum Flashing surface and ambient temperatures at -5°C and above.



*Details shown are typical illustrations only and not working drawings. For assistance with working drawings and additional technical advice please contact Grace Technical Services*

## Supply

| Perm-A-Barrier® Aluminum Flashing |                  |                         |
|-----------------------------------|------------------|-------------------------|
| Widths                            | Rolls per carton | Approx. Weight per roll |
| 100 mm x 15 m                     | 18 rolls         | 1.6 kg                  |
| 150 mm x 15 m                     | 12 rolls         | 2.4 kg                  |
| 225 mm x 15 m                     | 6 rolls          | 3.7 kg                  |
| 300 mm x 15 m                     | 6 rolls          | 4.8 kg                  |

| Ancillary Products                      |                                                                                                                              |
|-----------------------------------------|------------------------------------------------------------------------------------------------------------------------------|
| <b>Bituthene® Primer S2</b><br>Coverage | 5 & 20 litre can<br>10-12 sq m per litre<br>(depending upon method of application, surface porosity and ambient temperature) |
| Bituthene® Mastic                       | 4.5 litre can                                                                                                                |

## Physical Properties

| Property                                             | Typical Value       | Test Method              |
|------------------------------------------------------|---------------------|--------------------------|
| Thickness                                            | 1 mm                | ASTM D3767 method A      |
| Minimum tensile strength, membranes                  | 4.1 MPa (600 psi)   | ASTM D412 die C modified |
| Minimum tensile strength, film                       | 27.6 MPa (4000 psi) | ASTM D412 die C modified |
| Minimum elongation, to failure of rubberized asphalt | 200 %               | ASTM D412 die C modified |
| Pliability, at 180° bend over 25mm mandrel           | Pass at -26°C       | ASTM D1970               |
| Crack Cycling, 3.2 mm at -32°C                       | Unaffected          | ASTM C836                |
| Minimum puncture resistance, membrane                | 355 N               | ASTM E154                |
| Water absorption                                     | 0.1 %               | ASTM 570                 |

All declared values shown in this data sheet are based on test results determined under laboratory conditions and with the product sample taken directly from stock in its original packing without any alteration or modification of its component parts.

## When applying Aluminum Flashing to Perm-A-Barrier Wall Membrane and Wall Flashing

Apply a bead of Bituthene Mastic along all top edges, cuts, penetrations and trowel into place.

If wrinkles develop, carefully cut out affected area and replace in similar procedure outlined in the application section. The repair piece must be pressed into place with a hand roller as soon as possible to ensure continuous and intimate contact with the substrate.

## Membrane Protection

Perm-A-Barrier Aluminum Flashing must be protected from damage by other trades or construction materials.

## Storage and Handling Information

All materials must be protected from rain and physical damage. Pallets of Perm-A-Barrier Aluminum Flashing must not be double stacked on the job site. Provide cover on top and all sides, allowing for adequate ventilation. Store membrane where temperatures will not exceed 30°C for extended periods.

## Limitations

Perm-A-Barrier Aluminum Flashing can be used in cavity or vertical wall construction where extended UV exposure is required (up to 1 year). However, Perm-A-Barrier Aluminum Flashing should not be used in applications such as roofing applications and open joint wall panels where it will be left permanently exposed to UV.

## Health and Safety

There is no legal requirement for a Material Safety Data Sheet for Perm-A-Barrier membranes and flashing. Refer to product carton for additional safety information. For health and safety questions please contact Grace Construction Products Limited.

For Bituthene Primer S2 and Bituthene Mastic, read the product label and Material Safety Data Sheet (MSDS) before use. Users must comply with all risk and safety phrases. MSDS's can be obtained from Grace Construction Products.

[www.graceconstruction.com](http://www.graceconstruction.com)

Grace Construction Products Limited Ipswich Road Slough Berkshire SL1 4EQ United Kingdom  
Tel +44 (0)1753 490000 Fax +44 (0)1753 490001

Bituthene and Perm-A-Barrier are registered trademarks of W R Grace & Co.-Conn.

The information given is based on data and knowledge considered by GRACE to be true and accurate and is offered for the user's consideration, investigation and verification only. Since the conditions of use are beyond our control we do not warrant the results to be obtained. None of these statements, recommendations or suggestions shall constitute a warranty, guarantee, representation or statement of similar legal nature. No statement, recommendation or suggestion is intended for any use which would violate or infringe statutory obligations or any rights belonging to a third party. This data sheet should be checked against the latest version available from the local GRACE Representative or the GRACE website. The information contained in the latest data sheet supersedes all previously published editions. Visits to site by GRACE personnel do not constitute supervisory responsibility.

These products may be covered by patents or patents pending. Copyright 2011. Grace Construction Products Ltd PABAF/UK/001b 09/11

**GRACE**